

Midea -40°C Biomedical Freezer

Midea freezers can be used in hospitals, epidemic prevention stations, universities, scientific research institutes, and electronic chemical industry enterprise labs. It is strictly prohibited to store flammable and explosive dangerous goods, strong acids, strong alkalis and other corrosive goods.



MD-40L308
Net capacity 308L

Safer Storage Superior Temp. uniformity & Precise control

- Microcomputer Temperature Control System.
- Temperature accuracy 0.1°C.
- Temperature uniformity $\leq 4^\circ\text{C}$.
- USB port, temperature and alarm records traceable.
- Multi-alarm functions.

Humanized Design Friendly for daily use

- Fixed caster + universal wheel.
- Safety lock, Easy open handles.
- Anti-condensation door, Cable port.
- Wide voltage range design.
- Remote alarm contact, Dry contact.

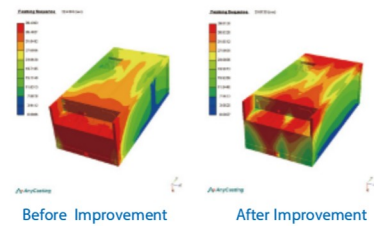
LCD Temperature Control Systems

Button-type control panel is easy to operate, the temperature and alarm settings can be adjust on the panel.

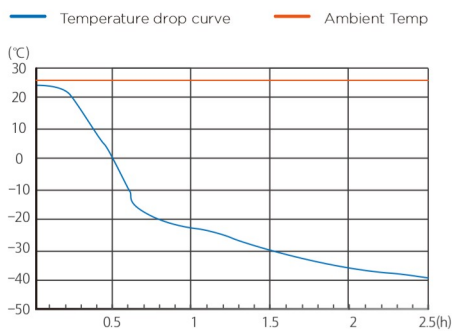


LBA Forming Technology

The world's leading fourth generation foaming agent More uniform density, Better insulation, more energy-saving. More reasonable foaming layer design, larger interior storage space.



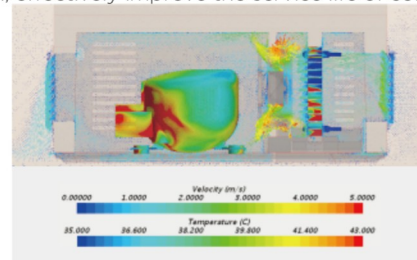
Typical Performance Characteristics at 25°C Ambient



MD-40L308

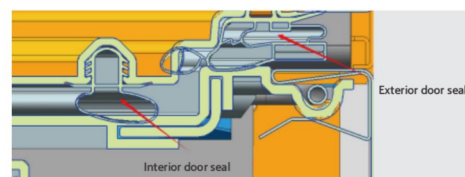
Micro-channel condenser

Powerful heat dissipation for condenser, heat exchange capacity increase by more than 20% than common copper tube fin condenser. Excellent compressor overheating protection, effectively improve the service life of core parts.




Three-dimensional seal

The unique three-dimensional seal, through the double-layer door seal and the multi-layer airbag sealing design, can effectively reduce the leakage of cold air and achieve best thermal insulation performance.



Midea -40°C Biomedical Freezer

Item	Model No.	MD-40L308
Product Image	Product Image	
Product structure data	Temperature Range	-20--40°C
	Fridge Storage Volume(L)	308 L
	External Material	High quality coated steel
	Internal Material	High quality coated steel
	Product Dimensions(mm)(wxdxh)	700*690*1920
	Interior Dimensions(mm)(wxdxh)	540*450*1277
	Packing Dimensions(mm)(wxdxh)	755*715*2000
	Loading Dimensions(mm)(wxdxh)	755*715*2035
	Net/Gross Weight	102/114
	Load capacity (40HQ)	24/48
	Thickness of Foaming layer(mm)	75
	Foaming agent	Cyclopantane
	Packing	Carton
Stacking layers	1	
Technical data	Cooling Type	Direct cooling
	Defrost type	Manual
	Climate Class	N
	Noise dB(A)	45
	Rated Voltage/Frequency(V/Hz)	220-240V/50Hz
	Rated Power(W)	295
	Rated Current(A)	1.9
	Refrigerant/Amount(g)	R290,118g
Control	Controller	Microprocessor
	Display	LCD display
Product Performance	Temperature Accuracy	0.1 °C
	Temperature uniformity/°C	4°C
Alarms	Sound Alarm	Y
	Light Alarm	Y
	Power Failure Alarm	Y
	Sensor Failure Alarm	Y
	Environment Temperature Alarm	Y
	Door ajar Alarm	Y
	High Temperature Alarm	Y
	Low Temperature Alarm	Y
	Remote Alarm	Y
Accessories	USB	Y
	Anti-condensation Door lock	Y
	Backup Battery	Y
	Handle	Grip
	Shelves/Drawers Qty	7 drawers
	Cable Port	Y
	Castors/type	Y